



  
**Danelaw**<sup>®</sup>

# ROOFING & VENTILATION FOR SLATE ROOFS

PRODUCT GUIDE

[www.hambleside-danelaw.co.uk](http://www.hambleside-danelaw.co.uk)

+44 (0)1327 701 910

# SLATE

**Danelaw; a brand by Hambleside Danelaw Ltd is the market leader for its range of flashing, ventilation and roofing accessories.**

Within the extensive Danelaw range, products have been designed and then manufactured to suit slate roof practice throughout the British Isles.

The primary function of a slate roof is to provide shelter from the elements such as rain, wind and snow. The application of slate roofs has proven successful for centuries.

The advantages of using natural slate roofing;

- It is not affected by extreme temperatures, suitable for any climate
- High resistance to acid and alkali chemicals
- Fire resistant
- It is expected to last for many years
- Proven method of application and fixing
- Each slate batch has its own individual character
- Will keep its colour
- It is non-porous and allows for water to flow off the roof
- Light in comparison to some other forms of roof covering - saving time and therefore cost of the roof structure

Different patterns formed on slate roofs have evolved regionally depending on the natural slate available. Slates can often be defined by their place of origin such as 'Westmorland' originating from Cumbria, which use to be known as County of Westmorland.

Slates also have names depending on their size:

Narrow Ladies	355 x 160mm
Small Ladies	355 x 205mm
Headers	355 x 255mm
Ladies	405 x 205mm
Broad Ladies	405 x 230mm
Wide Ladies	405 x 225mm
Viscountesses	460 x 230mm
Wide Viscountesses	460 x 255mm
Countess	510 x 255mm
Wide Countess	510 x 305mm
Marchioness	560 x 280mm
Small Duchess	560 x 305mm
Duchesses	610 x 305mm
Princesses	610 x 355mm

The main slate producer in Europe and worldwide is Spain. Brazil is the second largest, in the US the main quarries are in Vermont, New York and Pennsylvania. In the UK, slate is mainly found in Wales, Cornwall and Cumbria. All these slates will differ in size, shape and colour, with many sold in the UK.

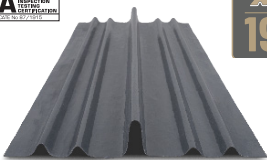
This slate brochure showcases the variety of products suited for slate roofs including those designed to suit Scottish practice.

The logo for Danelaw, featuring a stylized brown roof gable icon above the word "Danelaw" in a bold, dark blue sans-serif font.



**DRY FIX VALLEY TROUGHS**  
FOR SLATE ROOFS

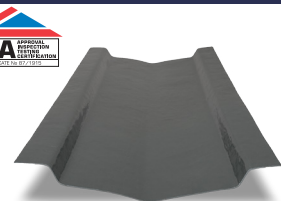
THE ORIGINAL  
1997



**HDL DVS 1 (L 3000mm)**  
**HDL DVS 2 (L 2400mm)**

The original GRP valley trough creates a close cut appearance for new build and refurbishment work. Quick to install and does not require the need for any counter battens and special eaves pieces. Suitable for roof pitch differentials of up to 20°.

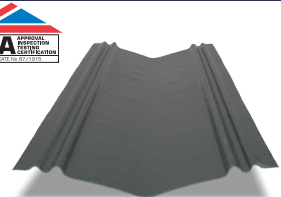
**OPEN VALLEY TROUGHS**  
FOR SLATE ROOFS



**HDL SVT (W 330mm)**  
**HDL SVTU (W 360mm)**

Provides drainage channels at the roof valleys. Manufactured from GRP, they are lightweight and a cost effective alternative to lead. Suitable for roof pitch differentials of up to 15°.

**OPEN VALLEY TROUGHS**  
FOR SCOTTISH SLATE ROOFS



**HDL SSVT**

Provides drainage channels at the roof valleys. Manufactured from GRP, they are lightweight and a cost effective alternative to lead. Suitable for roof pitch differentials of up to 15°. For use on fully boarded roofs.

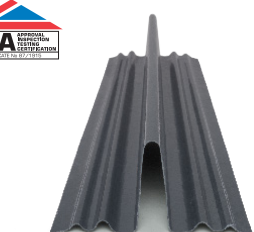
**DRY FIX BONDING GUTTERS®**  
FOR SLATE ROOFS



**HDL DBG1**

Creates a weathertight joint between dissimilar roof coverings on semi-detached or terraced properties. Manufactured from GRP, they are lightweight and a cost effective alternative to lead.

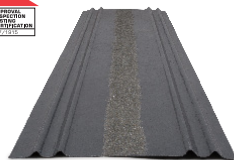
**DRY FIX BONDING GUTTERS®**  
FOR SCOTTISH SLATE ROOFS



**HDL DBG2**

Creates a weathertight joint between dissimilar roof coverings on semi-detached or terraced properties. Manufactured from GRP, they are lightweight and a cost effective alternative to lead. Suitable where there may be tiling battens on one side only.

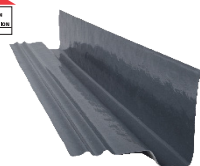
**BONDING GUTTER®**  
FOR SLATE ROOFS



**HDL BG**

Creates a weathertight joint between dissimilar roof coverings on semi-detached or terraced homes, i.e. slate to tile, with integral mortar protection for roof verges. Manufactured from GRP, they are lightweight and a cost effective alternative to lead.

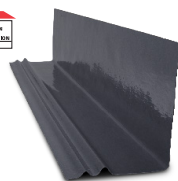
**CONTI-SOAKERS**  
FOR SLATE ROOFS



**HDL CSS Lipped (H 150mm)**  
**HDL CSS Unlipped (H 140mm)**

Provides a secondary line of protection against wind driven rain where the roof meets an abutment wall. Manufactured from GRP, they are lightweight and a cost effective alternative to lead. Available in lipped to fix directly into the wall and unlipped to be installed with a separate flashing.

**CONTI-SOAKERS**  
FOR SCOTTISH SLATE ROOFS



**HDL SCSS**

Provides a secondary line of protection against wind driven rain where the roof meets an abutment wall. Manufactured from GRP, they are lightweight and a cost effective alternative to lead. Suitable for fixing directly to sark boards and unlipped to be installed with a separate flashing.

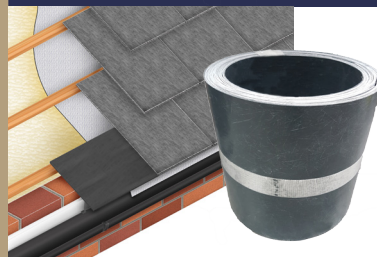
**INDIVIDUAL SOAKER**  
FOR SLATE ROOFS



**HD SS500 (L 300mm)**  
**HD SS600 (L 380mm)**

Lightweight pre-formed polypropylene soaker. Creating a weathertight joint at abutments. Quick and simple to install. To be used with 500 x 250mm and 600 x 300mm slates.

**CONTINUOUS EAVES COURSE**  
FOR SLATE ROOFS



**HDL CECS**

A GRP support eaves course replacing the first course of cut slates for fast installation. It offers savings in both time and materials. Suitable for all types and sizes of slates up to 600mm long.

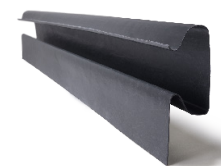
**CONTINUOUS VERGE**  
FOR SLATE ROOFS



**HDL DV6**

Continuous 3m verge system for new roofs suitable for under batten fixing. Manufactured from durable GRP, it provides weather protection for roof verges. No expansion joints required and quick and simple to install with no need for mortar.

**CONTINUOUS VERGE**  
FOR SLATE ROOFS



**HDL DV8**

Continuous 3m verge system ideal for refurbishment, designed to fit over existing detail and face fix to barge board or brickwork. Manufactured from durable GRP, it provides weather protection for roof verges.

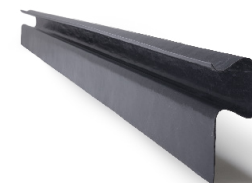
**CONTINUOUS VERGE**  
FOR SCOTTISH SLATE ROOFS



**HDL DV7**

Continuous 3m verge system designed to fix directly onto the sark board surface, or where an over batten fix is required. Manufactured from durable GRP, it provides weather protection for roof verges.

**CONTINUOUS VERGE**  
FOR SCOTTISH SLATE ROOFS



**HDL DV9**

Continuous 3m verge system suitable for sark board refurbishment projects. Designed to fix over existing detail and to be face fixed over the verge onto the gable. Manufactured from durable GRP, it provides weather protection for roof verges.

**Slate Product Guarantees**

30 year guarantee	Valley Troughs, Bonding Gutters®, Conti-Soakers, Continuous Verges and Continuous Eaves Course
20 year guarantee	Individual Soakers and Slate vents

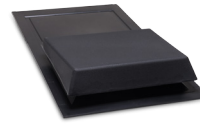
## VENTS FOR SLATE ROOFS



**SRV5U** - Universal slate roof vent, made from polypropylene. Not suitable for soil ventilation or mechanical extraction. Size to suit either 600 x 300mm or 500mm x 250mm slates when trimmed. Available in Black and Grey. Airflow/vent 5,000mm<sup>2</sup>.



**SRV10U** - Universal slate roof vent, made from polypropylene. Suitable for soil ventilation or mechanical extraction. Size to suit either 600 x 300mm or 500mm x 250mm slates when trimmed. Available in Black and Grey. Airflow/vent 10,000mm<sup>2</sup>.



**SRV10/20** - Slate roof vent, made from polypropylene. Suitable for soil ventilation or mechanical extraction. Size to suit either 500mm x 250mm slates. Available in Black. Airflow/vent 10,000mm<sup>2</sup>.



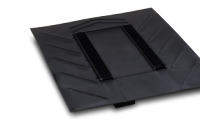
**SRV680** - Universal large base slate vent for 'random' and diminishing course slate roofs, made from polypropylene. Suitable for soil ventilation or mechanical extraction. Can be trimmed to 600 x 300mm base size. Size to suit 680 x 450mm slates. Available in Black and Grey. Airflow/vent 20,000mm<sup>2</sup>.



**ILSRV10/20** - Flush fitting slate roof vent, made from polypropylene. Suitable for soil ventilation or mechanical extraction. Base size 565 x 290mm to suit 500 x 250mm slates. Available in Black and Grey. Airflow/vent 10,000mm<sup>2</sup>.



**ILSRV10/24** - Flush fitting slate roof vent, made from polypropylene. Suitable for soil ventilation or mechanical extraction. Base size 615 x 300mm to suit 600 x 300mm slates. Available in Black and Grey. Airflow/vent 10,000mm<sup>2</sup>.



**ILSRV10/U** - Flush fitting slate roof vent with universal application, made from polypropylene. Suitable for soil ventilation or mechanical extraction. Size to suit either 600 x 300mm, 600 x 250mm or 450 x 230mm slates. Available in Black and Grey. Airflow/vent 10,000mm<sup>2</sup>.

## SOIL PIPE ADAPTOR KITS

HD SPA



HD SPA



HD SPA680



HD ILSPA



HD ILSPA



HD ILSPA



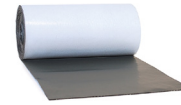
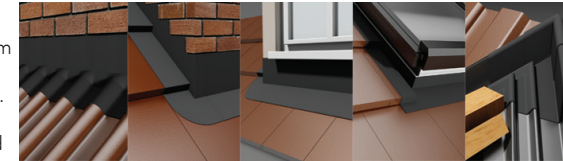
## RELATED PRODUCTS



**CON6+** A universal ventilated dry fix ridge and hip system that can be fitted with no special tools required. The patented jointing gasket adds flexibility and is also trimmable. System is suitable for different roof pitches. Complies with BS 8612. Pack contents ▶



**Fast Flash®** A secure flashing solution. The product can be installed on roofs with a minimum 5° pitch and is compatible with most widely used roof coverings. It is easy to install with a fully adhesive reverse. No specialised tools required.



**Roofing Underlay LR120** A low resistance breathable roof underlay. Intended for use on pitched roofs as a secondary barrier installed beneath tiles and slates. Integral tape version available and in width options 1.0m or 1.5m in 50m lengths.



**Roofing Underlay LR135** High quality medium weight low resistance breathable roof underlay. Intended for use on pitched roofs as a secondary barrier installed beneath tiles and slates. Available width options 1.0m or 1.5m in 50m lengths.



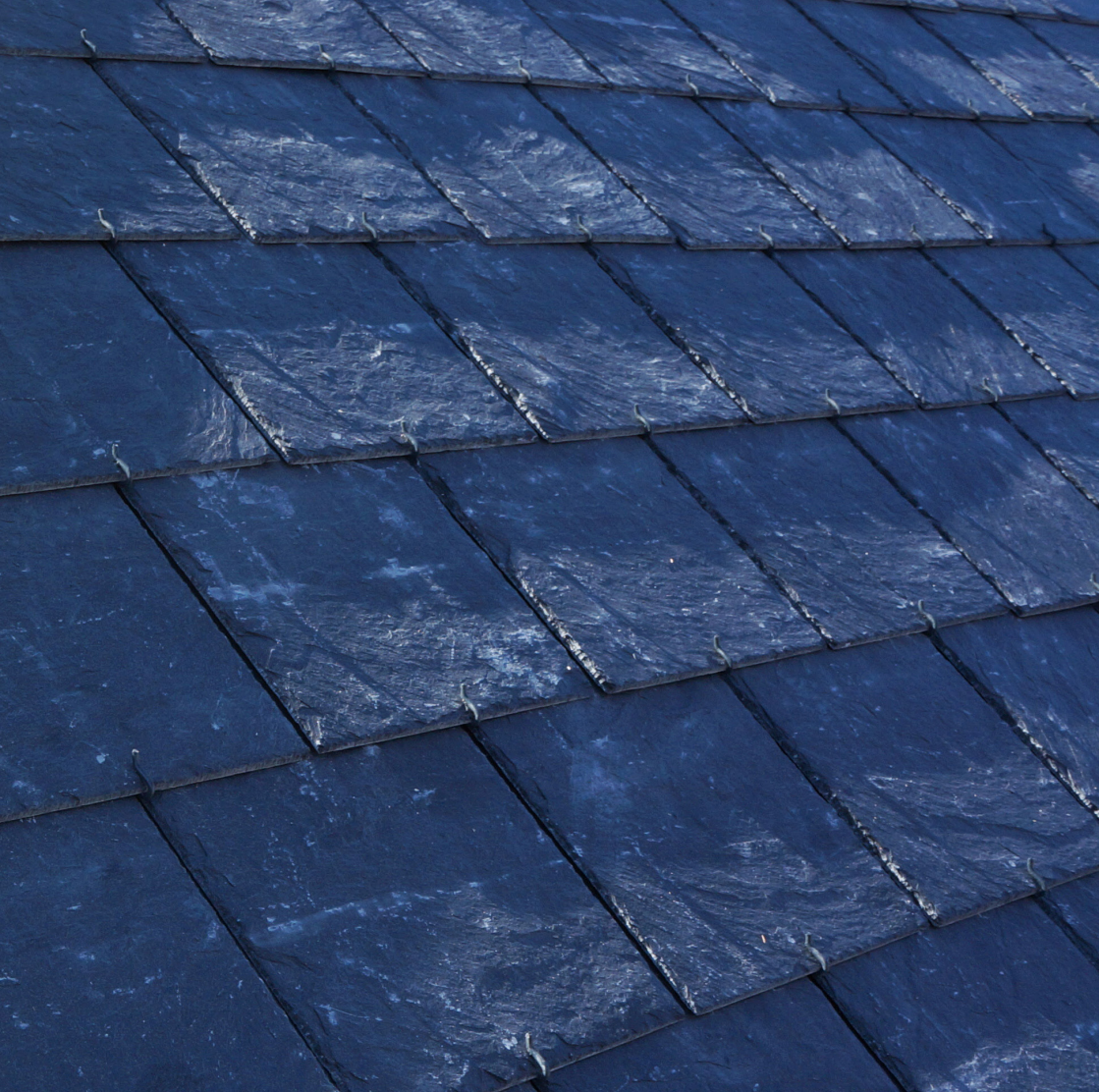
**Roofing Underlay LR150** High quality low resistance breathable roof underlay. Intended for use on pitched roofs as a secondary barrier installed beneath tiles and slates. Integral tape version available and in width options 1.0m or 1.5m in 50m lengths.



**Roofing Underlay LR180** Premium, high quality low resistance breathable roof underlay. Intended for use on pitched roofs as a secondary barrier installed beneath tiles and slates. Available in width options 1.0m or 1.5m in 50m lengths.



PRODUCTS	250mm batten gauge with lap restraining batten	345mm batten gauge with lap restraining batten	345mm batten gauge with integral tape
DANELAW LR120	Zones 1 to 5	Zones 1 to 3	-
DANELAW LR120TT	-	-	Zones 1 to 5
DANELAW LR135	Zones 1 to 5	Zones 1 to 2	-
DANELAW LR150	Zones 1 to 5	Zones 1 to 3	-
DANELAW LR150TT	-	-	Zones 1 to 5
DANELAW LR180	Zones 1 to 5	Zones 1 to 4	-



**Hambleside Danelaw**   
**Building Products**

Hambleside Danelaw Limited  
Long March, Daventry,  
Northamptonshire  
NN11 4NR

Tel: +44 (0)1327 701910

Fax: +44 (0)1327 701919

Email: [sales@hambleside-danelaw.co.uk](mailto:sales@hambleside-danelaw.co.uk)

Web: [www.hambleside-danelaw.co.uk](http://www.hambleside-danelaw.co.uk)

Hambleside Danelaw Ltd has a continuing product development programme. With any updates or changes to these products, we will ensure that is communicated to our customers and stakeholders.

In accordance with our policy for continuous improvement we reserve the right, should the need to arise, to amend product specifications without prior notice.

Terms and conditions of sales are available upon request.

All content is as recommended by Hambleside Danelaw Ltd

Intellectual property of Hambleside Danelaw Ltd, permission required to reproduce all content of this publication.